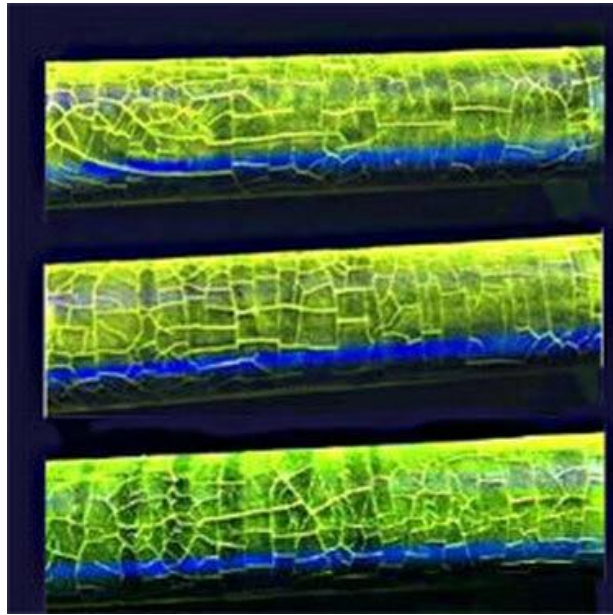


KEIYU Magnetic Particle Crack Test Bar



- Coarse and fine natural cracks in all directions
- CB Bars can be used with fluorescent and non-fluorescent inspection media
- CB Bars are supplied with serialization and certification
- CB Bars meet ASTM E709-08 (Section 14.2.2 & 20.8.2) and ASTM E1444 (Section 7.1.2)
- 1" (25.4mm) diameter and available in two different lengths; 6" (152mm) and 12" (305mm)

Packaged in a plexiglass tube protective case

A known defect sample is needed to demonstrate the use of proper magnetizing technique (under or over magnetization) as well as the quality of magnetic particles, illumination, etc..

Cracks are created by a proprietary process. Every bar is different